

# CT STATE COMMUNITY COLLEGE

CAPITAL

# CAMPUS TOUR



**Building**

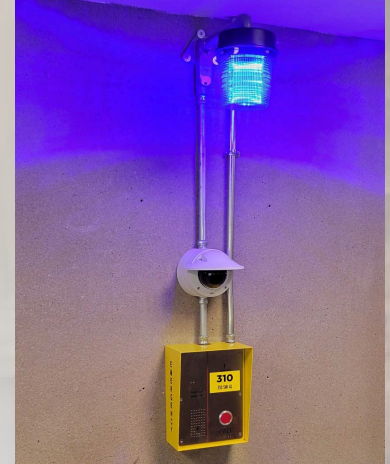
**Information**

# PUBLIC SAFETY & THE MORGAN STREET GARAGE

- Emergency phone lines anywhere in the building is \*\* (star, star)
- Emergency intercoms are located throughout the college directly under the blue lights. Push the button on the blue boxes to contact the emergency dispatcher directly.
- Sign up for Emergency Alert – snow delays/closings, lock-downs.
- Receive Police escorts to the parking garage.
- For emergencies in the Morgan Street Parking Garage, (Propark) can be contacted by using any emergency call box throughout the Morgan Street Garage.

**CT STATE**  
COMMUNITY COLLEGE

CAPITAL



# 1<sup>st</sup> FLOOR MAIN LOBBY



**CT STATE**  
COMMUNITY COLLEGE

**CAPITAL**

# Talcott Street Level



# 2<sup>nd</sup> FLOOR STUDENT AFFAIRS & CONTINUING EDUCATION

**CT STATE**  
COMMUNITY COLLEGE  
**CAPITAL**



CCC Alumni Wall of Fame

Advising and Counseling

Registrar's Office

- **ADVISING,**
- **CAREER & TALENT DEV.**
- **COUNSELING & DISABILITY SERVICES**
- **DIVERSITY, EQUITY & INCLUSION**
- **MANUFACTURING CENTER**

# 3<sup>rd</sup> FLOOR





A Place to Learn, Connect and Succeed



**4<sup>th</sup> FLOOR**

**CT STATE**  
COMMUNITY COLLEGE

CAPITAL



**Veterans Oasis Center**



# 5<sup>th</sup> FLOOR LIBRARY

# CT STATE COMMUNITY COLLEGE

CAPITAL

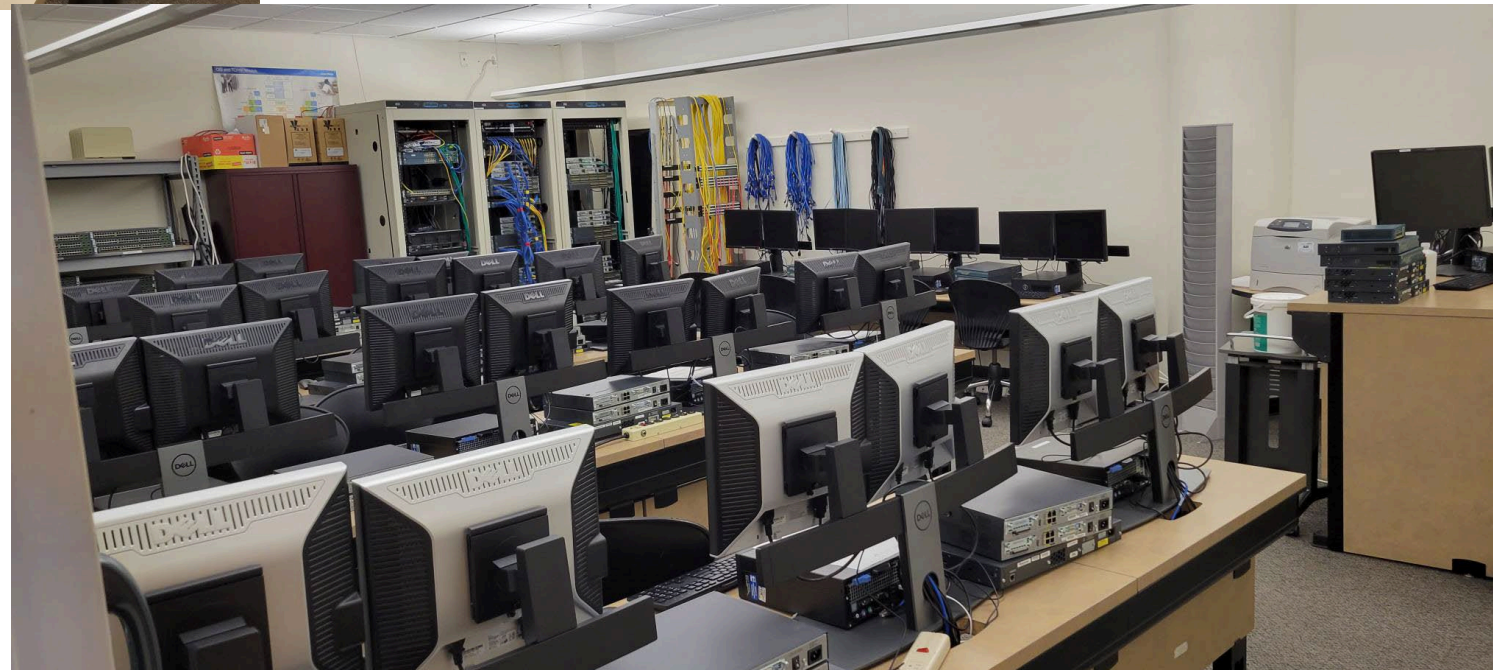




**CT STATE**  
**COMMUNITY COLLEGE**  
**CAPITAL**

**6<sup>th</sup> FLOOR**

**Networking and  
Computer Science**



**CT STATE**  
COMMUNITY COLLEGE

CAPITAL

**6<sup>th</sup> FLOOR**

**ARCHITECTURE LABS**





**6<sup>th</sup> FLOOR**

**21<sup>st</sup> Century Lab**

# 7<sup>th</sup> FLOOR

*Café*  
&

Vending Machines



# 7<sup>th</sup> FLOOR



**CT STATE**  
COMMUNITY COLLEGE  
CAPITAL



# STUDENT ACTIVITIES, MULTIPURPOSE & GAME ROOMS



**CT STATE**  
**COMMUNITY COLLEGE**

**CAPITAL**

**7<sup>th</sup> FLOOR**  
**FITNESS ROOM**



**7<sup>th</sup> FLOOR**

**CT STATE**  
**COMMUNITY COLLEGE**

**CAPITAL**

**MEDITATION &  
REFLECTION ROOM**





# 7<sup>th</sup> FLOOR BOOKSTORE



# 7<sup>th</sup> FLOOR FOOD PANTRY



# 8<sup>th</sup> FLOOR

# NURSING, PARAMEDICS & RADIOGRAPHY



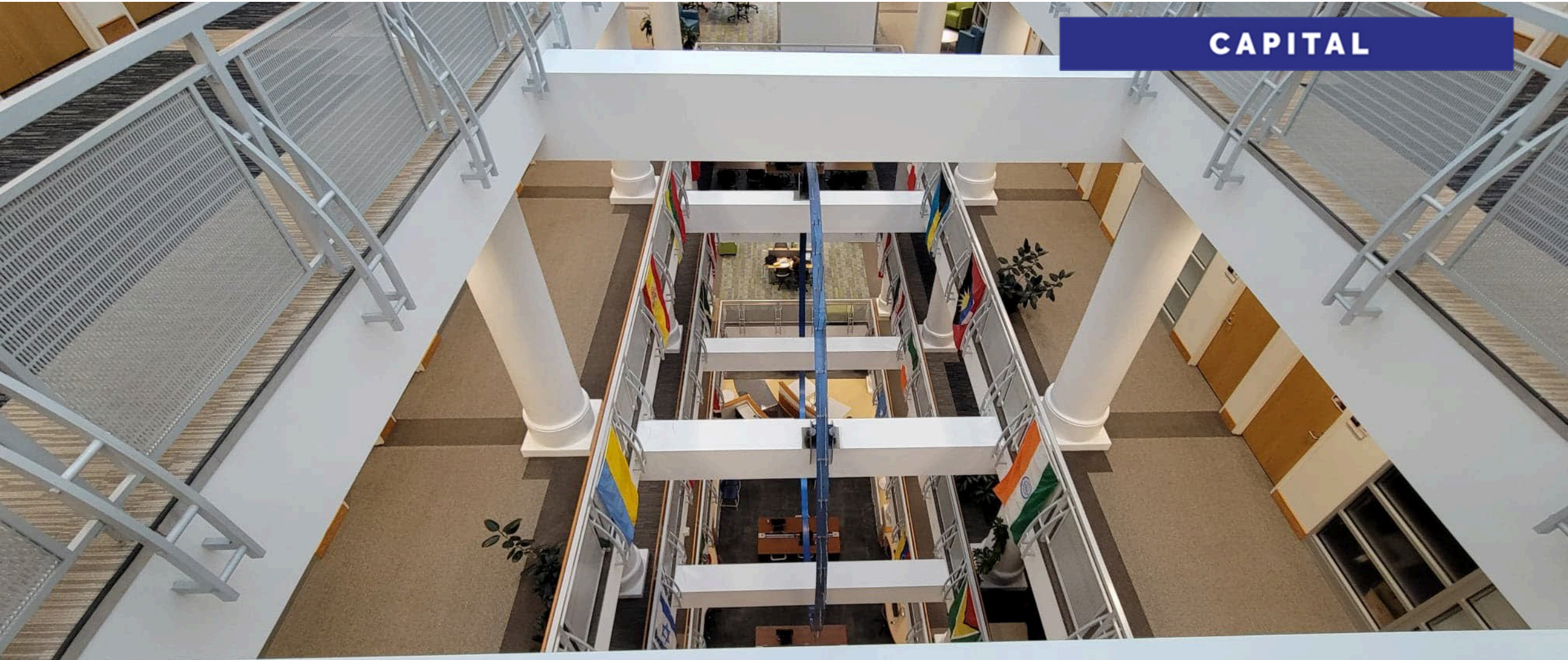
**CT STATE**  
COMMUNITY COLLEGE  
CAPITAL



# FACULTY OFFICES & DEPT. CHAIRS: FLOORS 8-11

**CT STATE**  
COMMUNITY COLLEGE

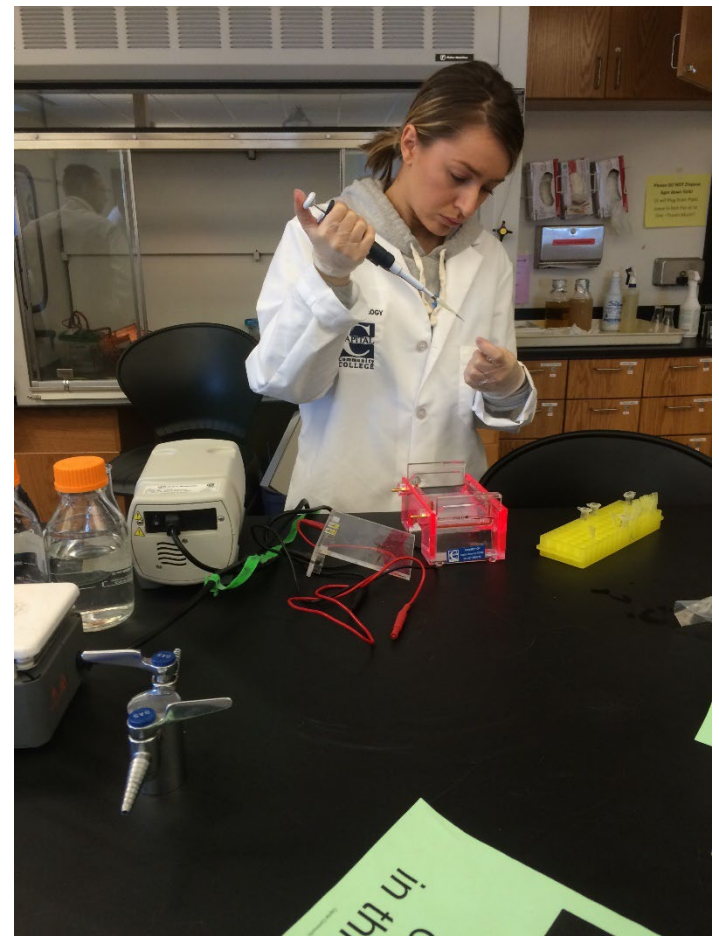
**CAPITAL**



# Microbiology & Science Labs



## 9<sup>th</sup> FLOOR



**CT STATE**  
COMMUNITY COLLEGE  
CAPITAL

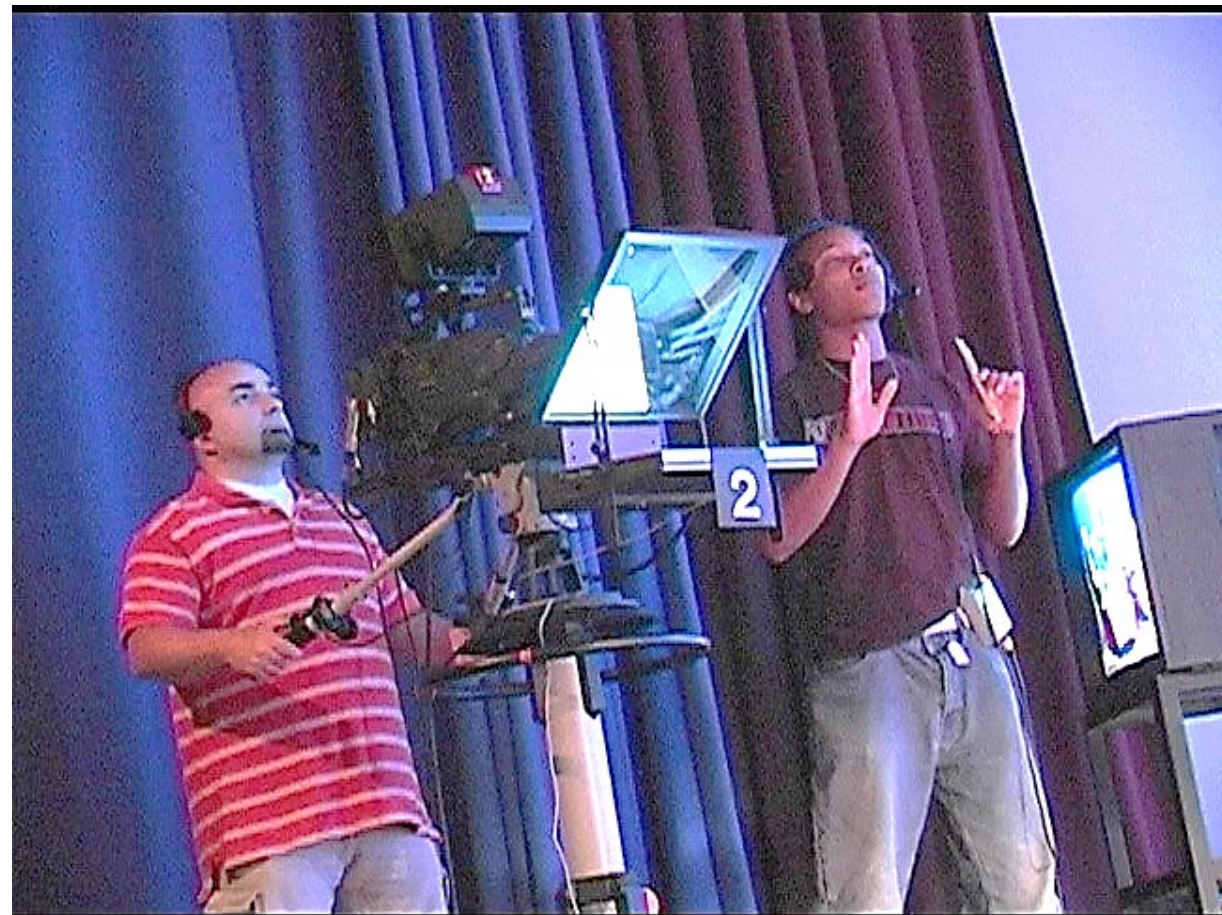


# 10<sup>th</sup> FLOOR BROADCAST STUDIO





**10<sup>th</sup> FLOOR**



**BROADCAST STUDIO**

**CT STATE**  
COMMUNITY COLLEGE

CAPITAL



**Theater Arts**



# 10<sup>th</sup> & 11<sup>th</sup> FLOOR



**CT STATE**  
COMMUNITY COLLEGE  
CAPITAL



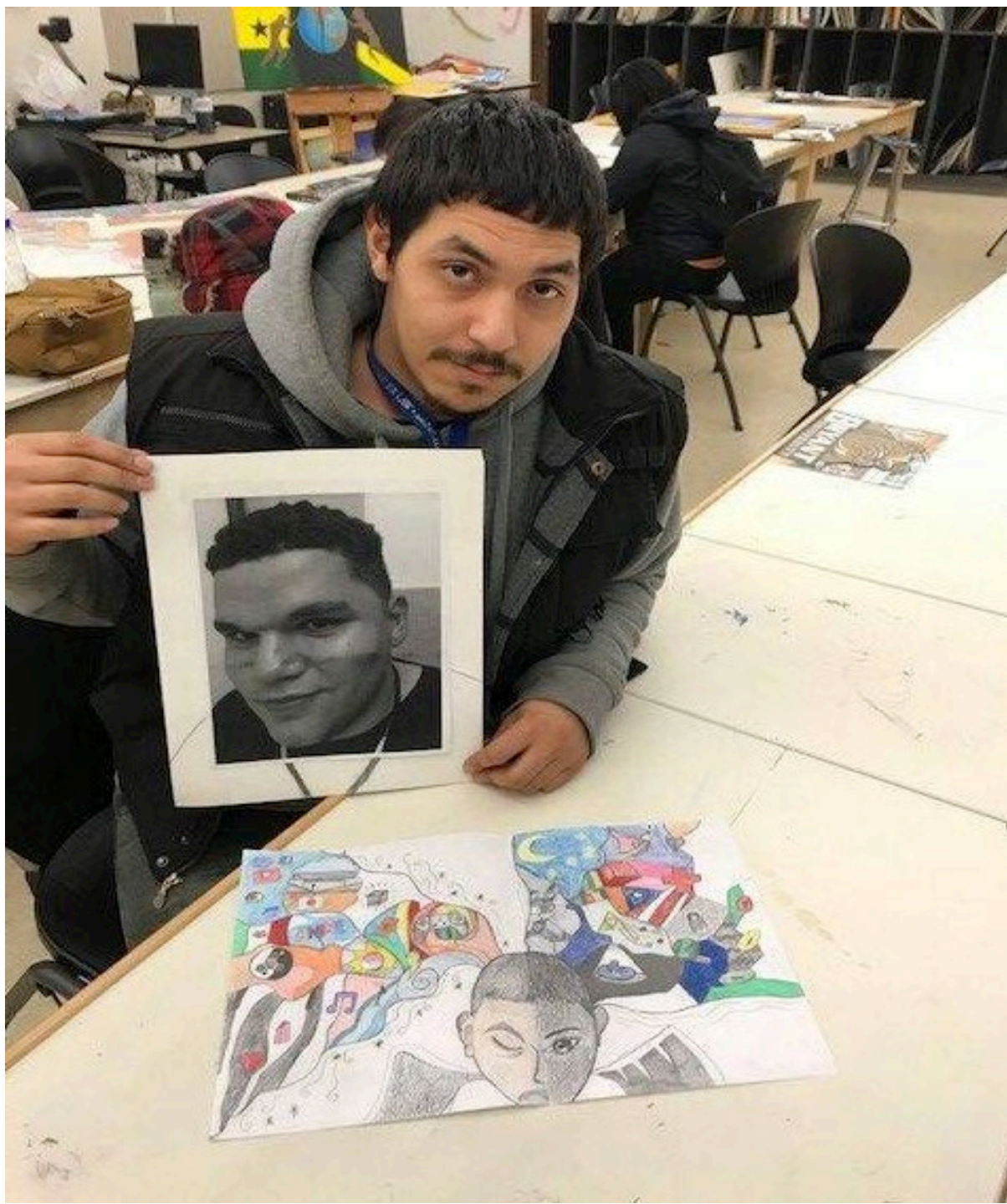
**11<sup>th</sup> FLOOR**

**DEGNAN HALL**



**CT STATE**  
**COMMUNITY COLLEGE**

**CAPITAL**



**CT STATE**  
COMMUNITY COLLEGE

CAPITAL

**11<sup>th</sup> FLOOR**

Art Studio

# 11<sup>th</sup> FLOOR

# Centinel Hill Hall Auditorium



**11<sup>th</sup> FLOOR**

**MUSIC & PIANO LABS**

